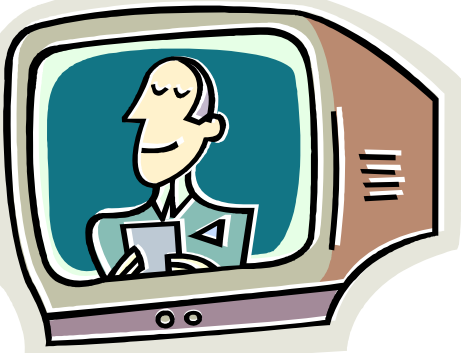



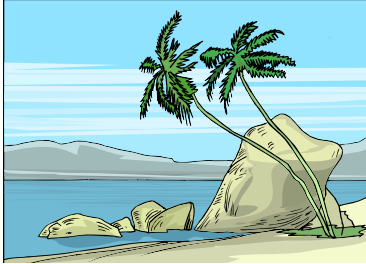

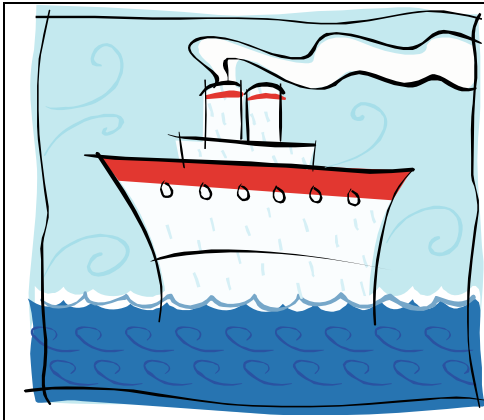


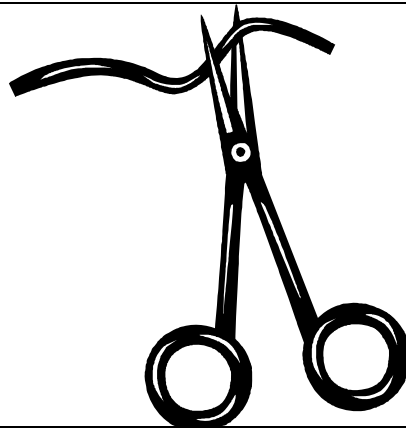
/ʃ/ vs. /sn/

	
<p>show</p>	<p>snow</p>
	
<p>shack</p>	<p>snack</p>
	
<p>shore</p>	<p>snore</p>

/ʃ/ vs. /sn/



ship



snip



short



snort




shag



snag

/ʃ/ vs. /sn/

	
shake	snake
	
share	snare
	
shale	snail
show snow, shack snack, shore snore, ship snip, short snort, shag snag, shake snake, share snare, shale snail	