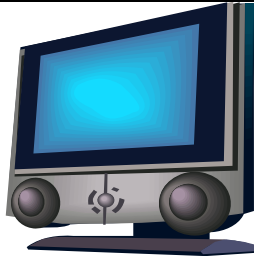


THE FIXED-UP-ONE ROUTINE FOR WEAK SYLLABLE DELETION

Silently tap the syllables when you say the words correctly.
Keep the first syllable weak comPUTER, toMATO, mosQUITO

computer



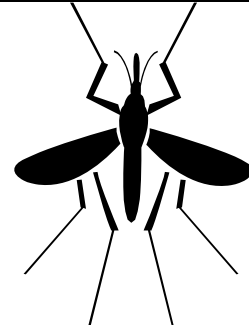
"If I said 'puter' instead of 'computer' I'd have to think to myself, no, not 'puter'. It's 'computer'. I'd need to fix it up and say 'computer'".

tomato



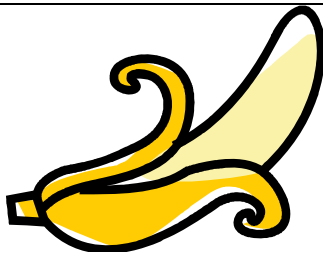
"This is a tomato, isn't it? A tomato. But if I said 'mato', I would need to quickly correct myself and put the first bit in. I would have to say 'tomato'".

mosquito



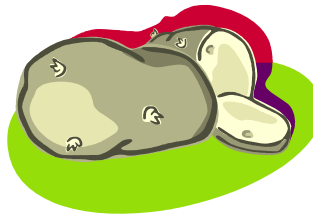
"If I said 'quito' instead of 'mosquito' what would I have to do? I'd have to ..."

banana



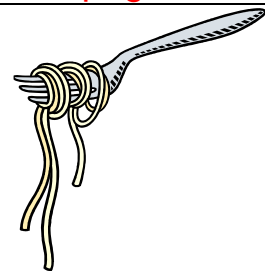
"It's not 'nana' is it? If I say 'nana' I have to quickly remind myself to fix it up and put the first bit in. it is supposed to be 'banana'".

potato



"What about 'tato'? Would I need to fix it up if I said 'tato'?"

spaghetti



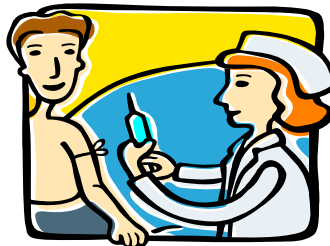
"There's getti on this fork. Uh oh! I need to do a ..."

Australia



"Is it 'stralia'? No, I missed out the first bit. I need to fix it up and say 'Australia'".

injection



"If I said I was having a 'jection' what would I have to do? I would have to do a ..."

important



"Does this sound right to you? Sir Topham and Lady Hat are very 'portant' He is the Fat Troler". What should I do about 'portant'? Do I need to fix up 'Fat Troller'?"