

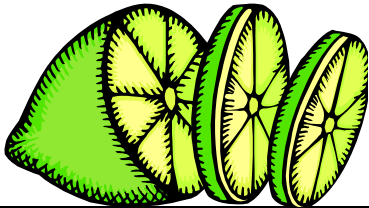
// vs /sl/ SSP



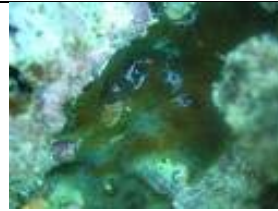
lamb



slam



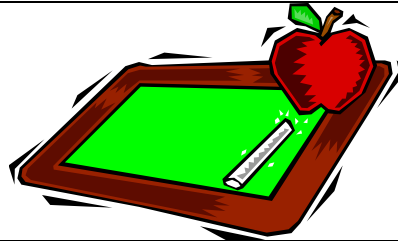
lime



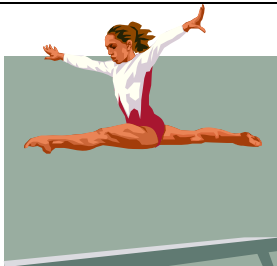
slime



late



slate



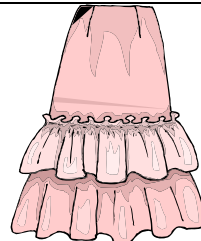
leap



sleep



lip



slip

lamb slam lime slime late slate leap sleep lip slip

// vs /s/ SSP

Most Complex		Sonority Difference	
↑	Voiceless fricative + nasal	sm sn	2
	Voiceless fricative + liquid	fl fr θr sl	3
↓	Voiced stop + liquid or voiceless fricative + glide	bl br dr gl gr sw	4
	Voiceless stop + liquid	pl pr tr kl kr	5
	Voiceless stop + glide	tw kw	6
Least Complex			

Consider targeting 3-element clusters, and 2-element clusters with smaller sonority differences (2 or 3 or 4).

vowels	0	voiced fricatives	4
glides	1	voiceless fricatives	5
liquids	2	voiced stops	6
nasals	3	voiceless stops	7