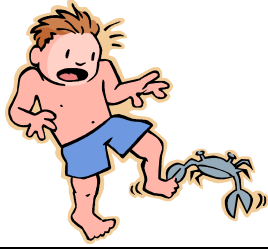
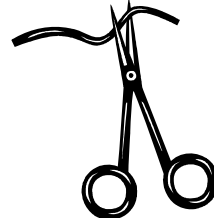


/ n/ vs /sn/ SSP



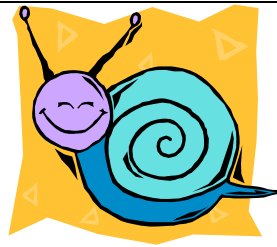
nip



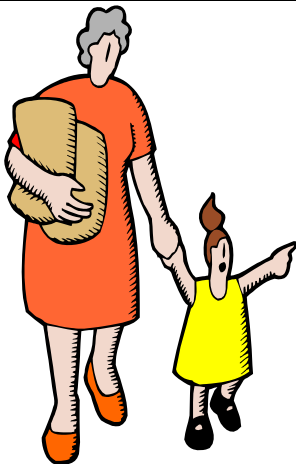
snip



nail



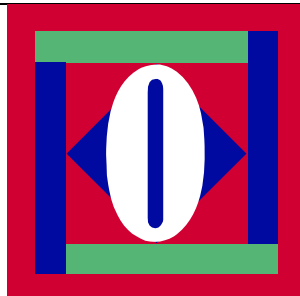
snail



nag



snag



nought



snort

nip snip nail snail nag snag snake nought snort

## / n/ vs /sn/ SSP

Most Complex		Sonority Difference	
↑	Voiceless fricative + nasal	sm sn	2
	Voiceless fricative + liquid	fl fr θr sl	3
↓	Voiced stop + liquid or voiceless fricative + glide	bl br dr gl gr sw	4
	Voiceless stop + liquid	pl pr tr kl kr	5
	Voiceless stop + glide	tw kw	6
Least Complex			

Consider targeting 3-element clusters, and 2-element clusters with smaller sonority differences (2 or 3 or 4).

vowels	0	voiced fricatives	4
glides	1	voiceless fricatives	5
liquids	2	voiced stops	6
nasals	3	voiceless stops	7